



CHESS

When I was 6, I asked my parents to buy me chess.

Actually in that time I wasn't much interested in chess.

But last year I liked it very much. I saw it in a different way. I imagine chess as a battle field, when I am the general and I command, because chess is a strategic game.

CHESS PIECES

-Pawn

-Knight

-Bishop

-Rook

-Queen

-King

PAWN



KNIGHT



BISHOP



ROOK



QUEEN

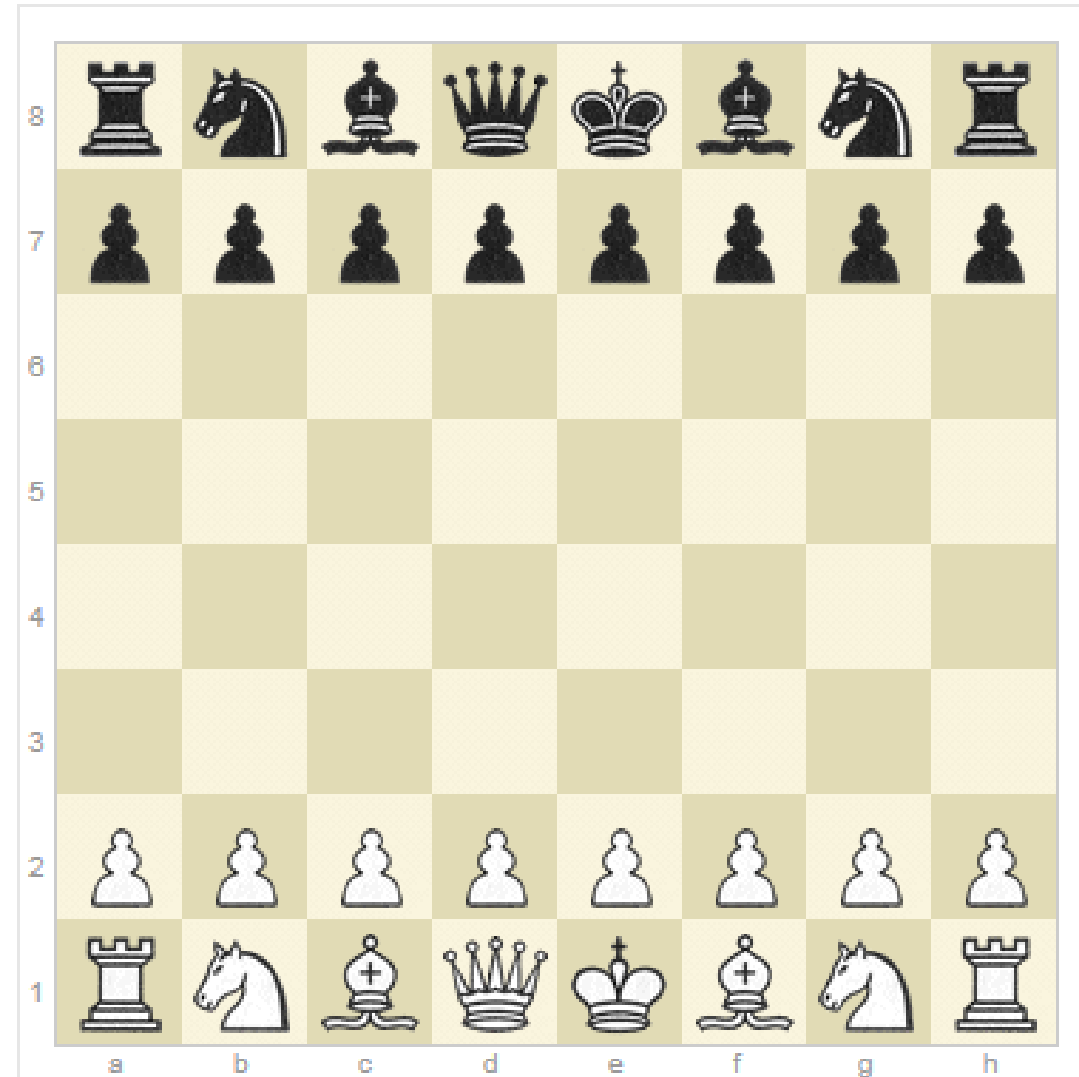


KING

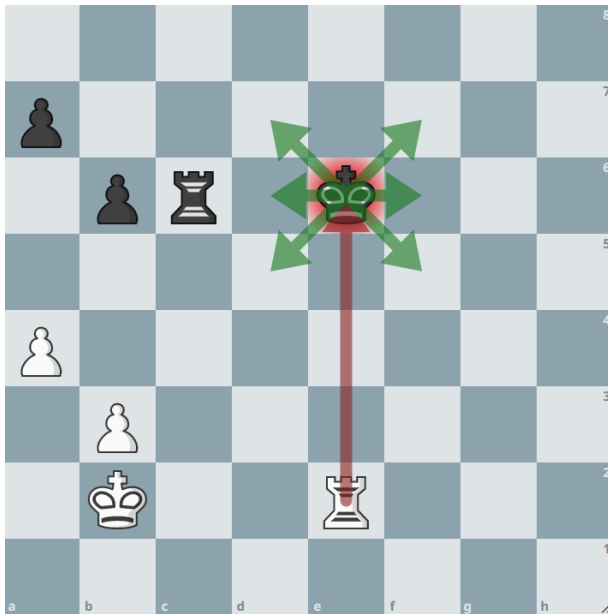


PIECES ON BOARD

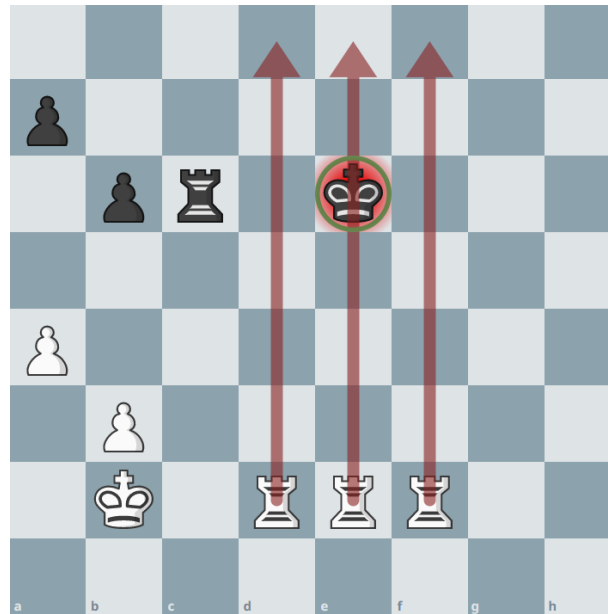
The picture shows the correct arrangement of pieces on a board.



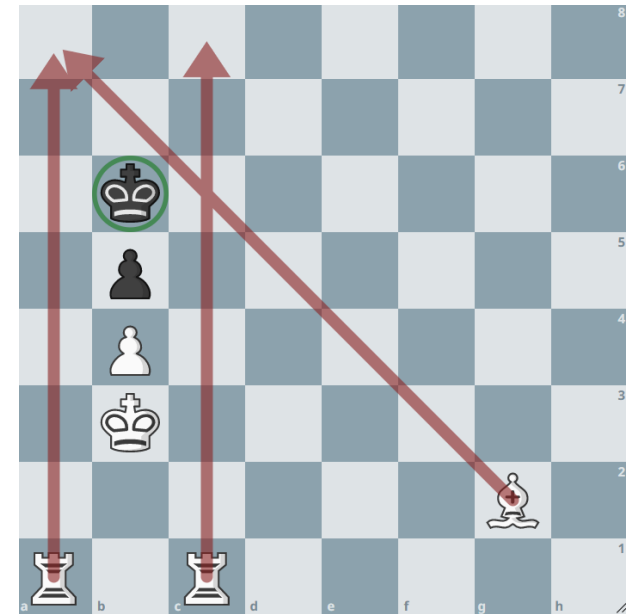
WHAT MEANS CHECK, CHECKMATE AND STALEMATE?



CHECK



CHECKMATE

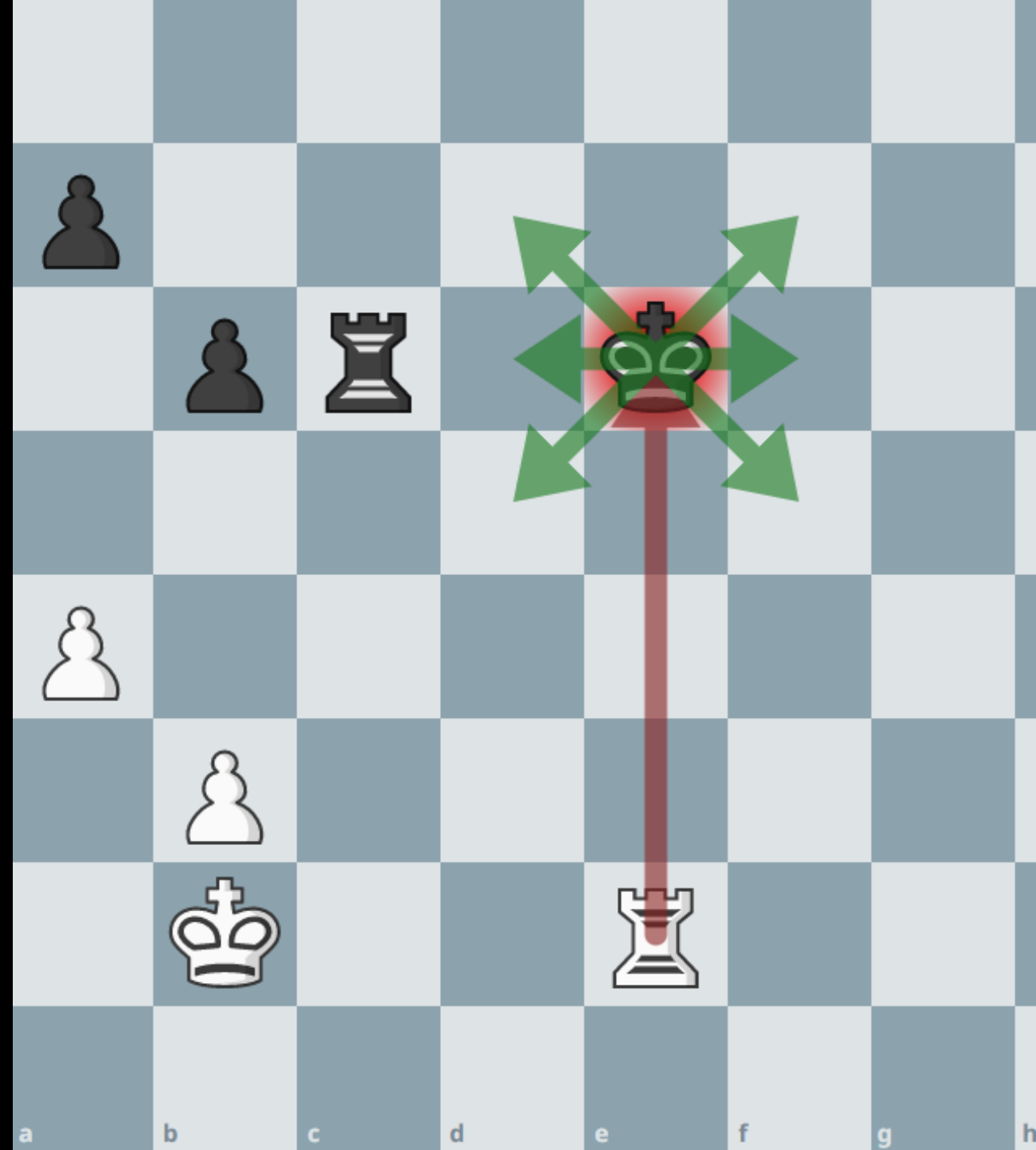


STALEMATE

CHECK

There are 3 important chess situations that I wan't to tell you about.

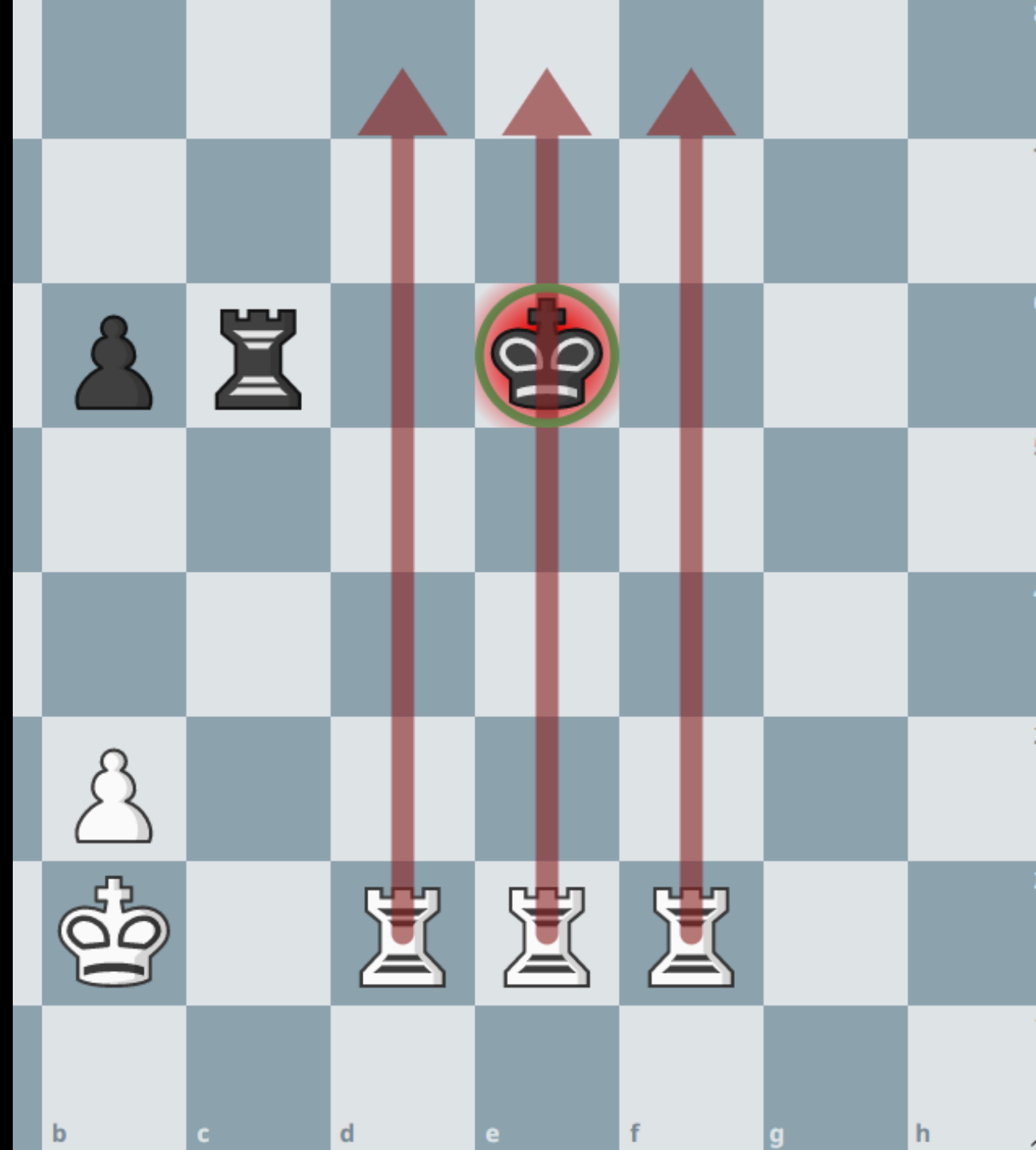
Now you see check. Check is a situation in chess match, when king is in dangerous getting killed on next move.



CHECKMATE

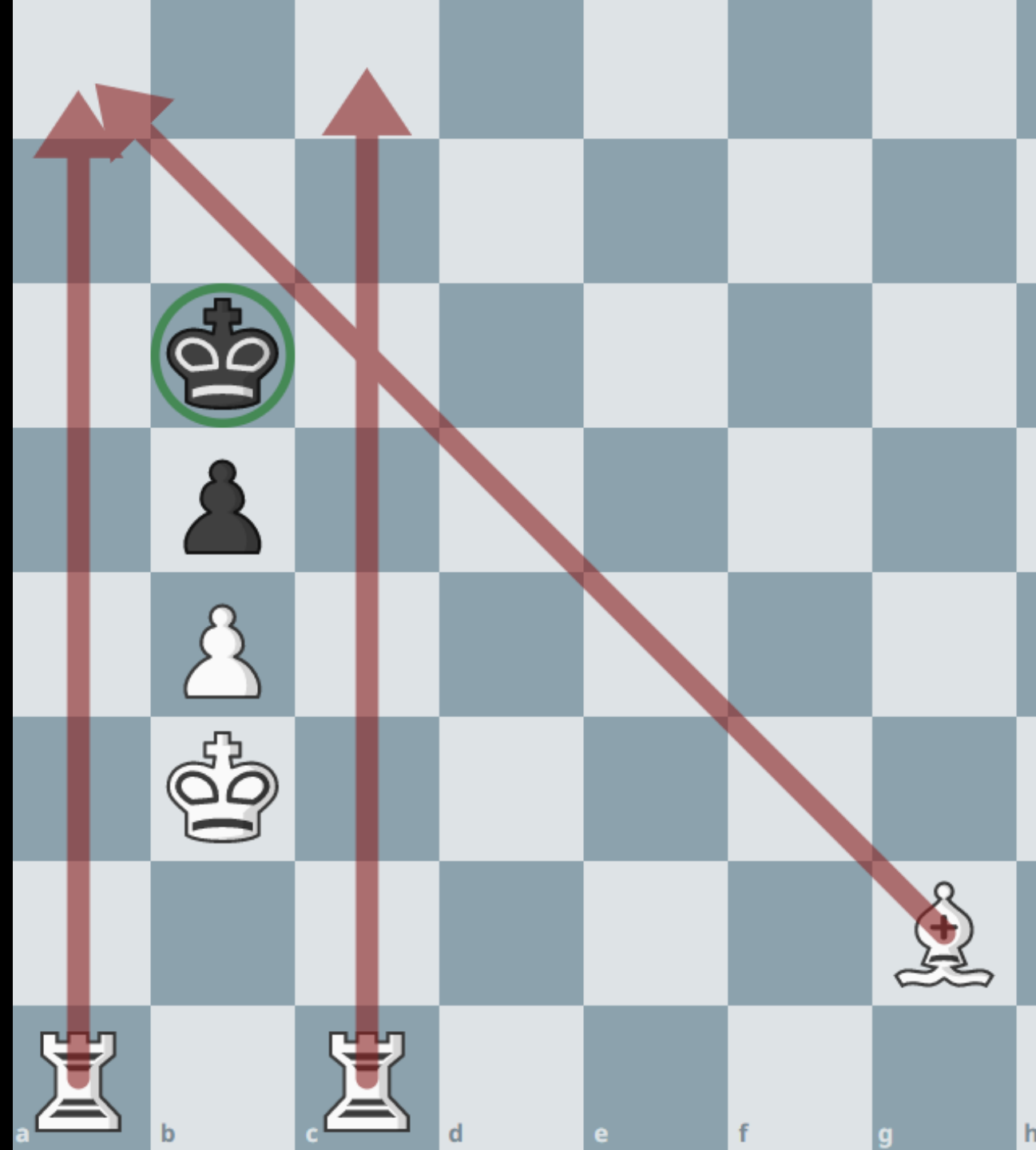
Checkmate is a situation in chess when king one of the sides is in check and have no move to protect himself or run away from check.

Checkmate ends the game. Player that got checkmated loses.



STALEMATE

Stalemate is a situation in chess when one of the players has no move, and his king isn't in check. With rules of chess, stalemate immediately ends the game with a draw.



WHAT IS A CHESS SIMUL?

Chess simul is a chess match, when a very good player, plays against many people on many boards. Simul player always plays white pieces.

Simul looks like this:

<https://youtu.be/esRZchm3Gq8>

(play from 25 second.)

QUEEN'S GAMBIT SERIES

A simul, that you just watched is a part of a Netflix series called „Queen's Gambit“. That film was a Netflix hit. Chess became much more popular. According to „New York Times“, chess boards sales have increased by over 100%! Also in Europe, this series was very famous and raise interest in this game.



MIECZYŚŁAW NAJDORF AND HIS SIMUL

Polish chess player, played simul on 45 boards blindfolded! That's right! He didn't see these boards. He played only in his mind. When he was coming to the board, someone was saying him, what move his oponent played. He „noted” that in his mind. The score was: 39 matches won, 4 draws and 2 loses.



CHESS IS A SPORT

In chess there are many tournaments. One of the most important is Candidates Tournament. Every player in this tournament, plays with each other. Player that has got the most points wins and he will be playing with current World Chess Champion. If he wins, he will be a new World Chess Champion.

There is also Chess Olympiad every 2 years and every 2 years Chess World Cup.

CHESS TITLES

These are 3 the most important chess titles that you can get.

1. FM – FIDE Master

2. IM – International Master

3. GM - Grandmaster

IMPORTANT CHESS PLAYERS

Important players in world of chess are:

- Wilhelm Steinitz
- Garri Kasparow
- Magnus Carlsen
- Jan Krzysztof Duda

1ST WORLD CHESS CHAMPION

Wilhelm Steinitz

Born in **1836**, in **Prague**.

He won the World Chess
Champion title in **1886**.



THE MOST FAMOUS CHESS PLAYER IN THE WORLD

Garri Kasparow

Born in **1963**, in Baku.

He is **58** years old.

He is one of the best chess
players all of the time.

He won the World Chess
Champion title in **1985**.



CURRENT WORLD CHESS CHAMPION

Magnus Carlsen

Born in **1990**, in Tønsberg

He is **31** years old.

He won the World Chess
Champion title in **2013**.



BEST POLISH CHESS PLAYER!

Jan Krzysztof Duda

Born in **1998**, in Cracow.

He is **23** years old.

Grandmaster from **2013**

1st Polish chess player in
history that won Chess World
Cup FIDE 2021



**I HOPE SOME OF YOU GET
INTERESTED IN CHESS AFTER
THIS PRESENTATION**

Thank you for your attention!

QUIZ!

[https://quizizz.com/join/quiz/6145ad8f689bf2001de9dceb/start?
studentShare=true](https://quizizz.com/join/quiz/6145ad8f689bf2001de9dceb/start?studentShare=true)